

Technical Data Sheet

GridBee Full Featured SCADA Control Panel

(120VAC)

Part Number: 102423

Description

The GridBee Full Featured SCADA accessory package offers the ability to monitor a GridBee for proper operation via monitoring motor current through 4-20mA signal current and/or run status via dry contact signal. Remotely control on or off via a 24VDC relay by a local PLC with signal for Hand Off Auto (HOA) Switch position. The unit is contained within a NEMA 4X Enclosure to be mounted near the 120VAC power source. Additional features include a circuit breaker and LCD display. UL508 Certified.

Specifications:

Power Source Required

120vAC, 20 Amp Outdoor Rated Receptacle

Enclosure

12" X 10" X 6", molded NEMA 4X

Mounting Feet Hole Pattern: 7.25" W X 13.50" H x .30" Dia Holes

Overall Dimension: 12" W X 14.375" H X 7.75" D

4-20 mA

Active 4-20mA, Output Load 250 Ohms

Linear Scaling: Mixer Current = (mA Value - 4) / 0.8

4 mA = 0 Amps Mixer Current

20 mA = 20 Amps Mixer Current

Signal Current:

Normal = 9.6 mA - 14.8 mA

Operating Status:

Normal (GREEN): 7.0 A - 13.5 A

Fault (RED): Outside of Normal Range

*Range is programmable via display meter.

Go to <https://www.trumeter.com/apm-software-download/>

Requires USB - B X USB - A cable and computer connection

Dry Contact Run Status Signal

There are two terminals available in NO / NC and Common Providing a run status signal. Run status is based on Normal Operating current being within proper operating range.

On/Off Control Relay

A relay is available with a 24 VDC coil to offer remote on or off control while the HOA switch is positioned in Auto for conditions requiring the unit to be shut off such as low water level.

Coil Power: 24 VDC nominal (19.2V to 28.4V DC)

Type: Normally open. Can be field adjusted to normally closed if required.

Auto Operating Temperature: -40°C to 55°C

Hand Operating Temperature: -40°C to 75°C

HOA Switch Position terminals included.



Figure 1: GridBee Full Featured SCADA Box



Shipping Size/Weight

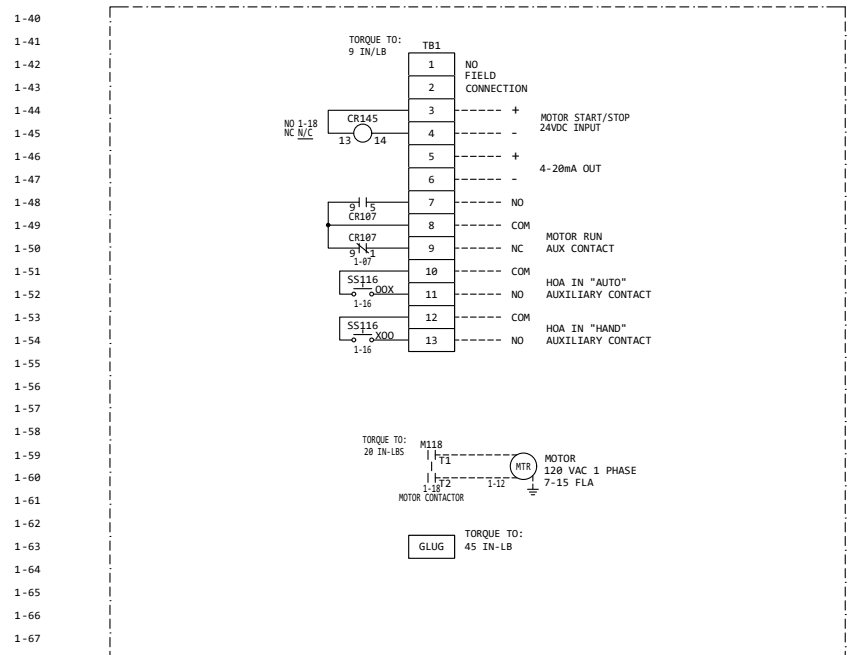
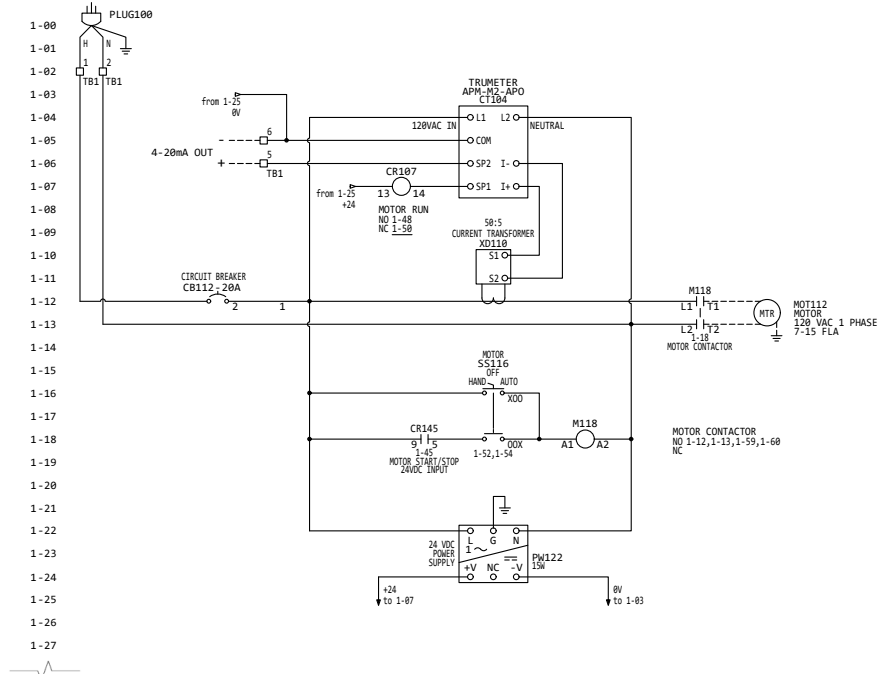
22 inch X 20 inch X 10 inch, 14 lbs

Warranty

Reference GridBee Product Limited Replacement Warranty.

GridBee Full Featured SCADA Control Panel

(120VAC) Electric Schematic



- NOTES:
1. FIELD WIRING IS SHOWN -----
 2. TEMPERATURE RATING OF FIELD INSTALLED CONDUCTORS MUST BE AT LEAST 140° F. (60° C.).
 3. FIELD WIRING WILL ACCEPT COPPER CONDUCTORS ONLY.
 4. CONNECT GROUND LUG IN PANEL TO A SECURE EARTH GROUND.
 5. OVERLOAD PROTECTION, MAIN DISCONNECT AND OVER CURRENT PROTECTION OF INCOMING FEEDER CIRCUIT PROVIDED BY OTHERS AND MUST BE SIZED ACCORDING TO THE PUMP/MOTOR MANUFACTURER SPECIFICATIONS.

MEDORA 102423		IFS DESCRIPTION PNL, GS SERIES 120V, DISPLAY, MEDORA 102423		
DRAWN BY MCH	DATE 2/12/21	PROJECT NUMBER OPP21003	SHEET NUMBER 1 OF 1	REV A
APPROVED BY	DATE			